

RTMS

SX-300 BT



ImageSensing
systems



SX-300 BT

Volume, Classification, Speed, Occupancy, incident detection, travel-time, OD matrices

Online web based applications, Microwave and Bluetooth all-in-one for up to 12 lanes

Ethernet, Non-volatile memory, field proven, all-weather, easy set-up self-learning

Cost effective, Low power, Self-diagnostics, Autonomous, Reliable and secure transmission

With our dedication to continuous development the specifications are subject to change. To verify the current information please visit www.deepbluesensor.com

RTMS SX-300 is manufactured in USA by Image Sensing Systems Inc.

© 2016 Traffic Network Solutions S.L. +34 93 205 85 62
C/Bruc-120 Pral, B. 08009 Barcelona, Spain

info@trafficnow.eu www.trafficnow.eu

Brought to you by

trafficnow®

RTMS



ImageSensing
systems

POWER SUPPLY

12 to 24 VAC or VDC
Min 5.8 W (configuration dependent)

MICROWAVE FREQUENCY BANDS

K-band, high resolution at 24GHz

BLUETOOTH

Dual channel operation
Two side-mounted antennas
110° horizontal angle; 30° vertical angle
Detects all standard Bluetooth® versions
More than 500 meters range
-104dB receive sensitivity

COMMUNICATIONS

Ethernet
Remote Sensor Access
Optional General Purpose IO

ENVIRONMENTAL

-40°C to +74°C
Vibration: 0.5 g up to 300 Hz
Shock: 10 g 11 msec half sine wave
Wind: up to 190 km/h
IP67

DIMENSIONS & WEIGHT

H x W x L 21 cm x 21 cm x 16 cm
1.80 kg (excl. Antennas)

REGULATORY

RoHS Compliant
FCC, CE EN 60215, EN 301 489-1, EN 301 489-3, EN 300 440-1, EN 300 440-2, EN61000-4-4
Canadian CSA C108.8 - M1983

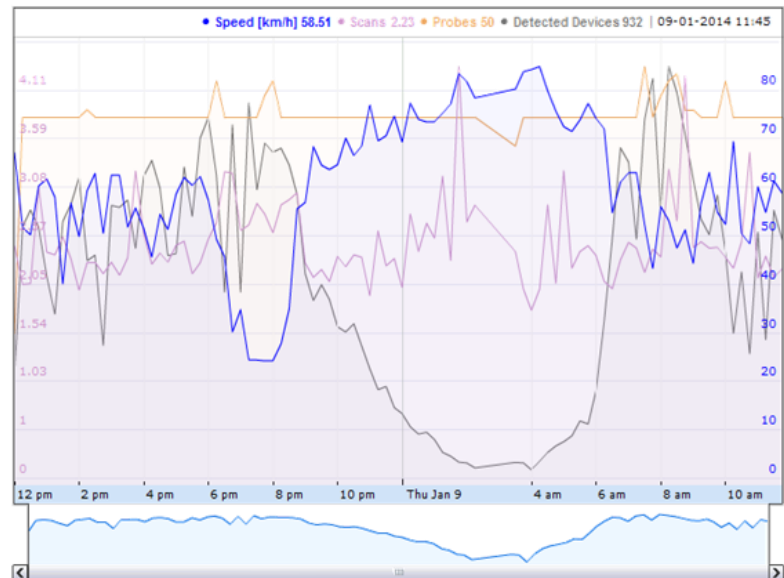
Real Time Segment data

Click on a segment in order to display its information

Segment:	[8] Av. Narciso de Jesús Sector Sauces->Puente Unidad Nacional (Puntilla-Guail)
Segment length:	6200 m
Heavy traffic if speed is below:	30.00 km/h
Free-flowing traffic if speed is above:	40.00 km/h
Average speed in segment:	49.29 km/h
Average travel time:	0 h 7 m 33 s
Sample Size:	10
Detected Devices:	146
Time interval:	2014-01-09 11:54:00

Most recent Historic values

Show OD Matrix Show History



SX-300 BT



With our dedication to continuous development the specifications are subject to change. To verify the current information please visit www.deepbluesensor.com

RTMS SX-300 is manufactured in USA by Image Sensing Systems Inc.

Brought to you by

trafficnow®

© 2016 Traffic Network Solutions S.L. +34 93 205 85 62
C/Bruc-120 Pral, B. 08009 Barcelona, Spain

info@trafficnow.eu www.trafficnow.eu